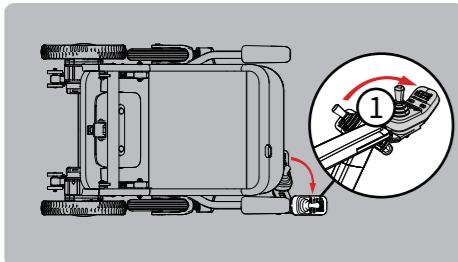
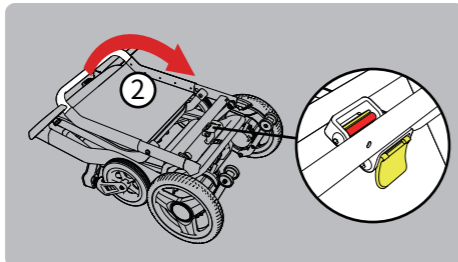


Easy to Fold

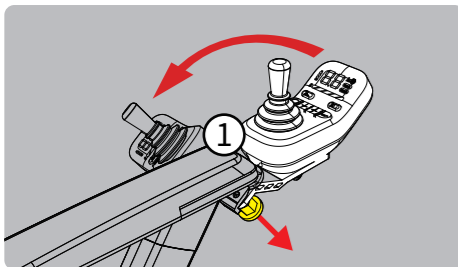


① As shown in the diagram, rotate the controller to the upright position.

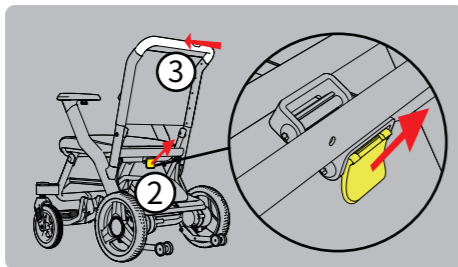


② Continue lifting until you hear a "click," indicating the frame lock is securely engaged.

Easy to unfold



① Hold the indexing pin and rotate the controller inward.



② Lift the frame locking switch upward to unlock.
③ Push the horizontal bar in the indicated direction until the wheelchair is fully folded.

DRIVING TO A BETTER LIFE

C40 Elite

Smart Mobility Made Simple

Affordable 3-in-1 Electric Wheelchair for Everyday Freedom

PRODUCT PARAMETERS

Model	C40 Elite
Dimensions Unfolded	980x575x915mm / 38.6"x22.6"x36"
Dimensions Folded	320x575x820mm / 12.6"x22.6"x32.3"
Packaging Dimensions	930x730x559mm / 36.6"x28.7"x22"
Total Weight	19.4kg / 42.7lbs(Excluding Battery)
Weight Capacity	120kg / 265Lbs
Maximum Speed	6Km/h / 3.7mph
Obstacle Climbing	40mm / 1.6"
Maximum Ditch Width	100mm / 3.9"
Front Tire Size	8-inch
Rear Tire Size	10-inch inflatable tire
Minimum Turning Radius	790mm / 31.1"
Charging Time	6-7h (12Ah)
Driving Range	15km / 9.3 miles(12Ah)
Dynamic Stability Uphill	9°

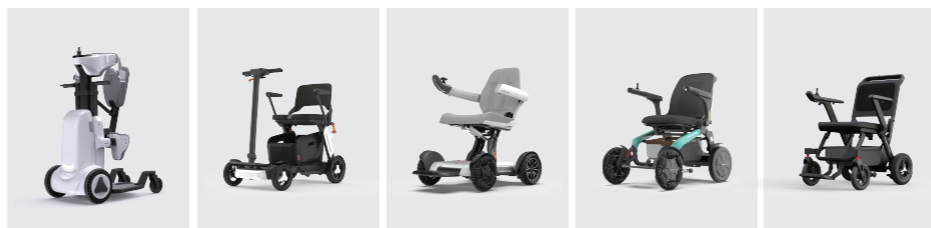
*All data are manually measured with possible deviations; please take the actual product as standard.
*Electric wheelchair hardware and software may differ slightly by production date, with features and performance subject to the real product.
*Parameters fluctuate within ±10%, affected by user weight, battery capacity, battery and tire conditions.
*A ±3% specification tolerance applies owing to manufacturing tolerance and ongoing product optimization.



Shanghai Bangbang Robotics Co.,Ltd

Floor 5, Building 3, No.188 Zhongchen Road, Songjiang District, Shanghai, China.
www.robooter.com

OUR FULL PRODUCT LINE



XZ-Droid Smart

Q40

X40

E60GT Pro

C40



PORTABLE FOLDING ELECTRIC WHEELCHAIR

Flip-up armrests

High resilience cushion

8" flameproof solid front tire



Power assisted mode

New precision integrated controller with front light

Sponge backrest

12Ah Lithium Battery

10" inflatable rear wheel

*Depending on production date of Electric Wheelchair, product hardware and software may vary slightly, the specific situation and functions will be subject to real world situations and performance.



9° Climbing angle



790 MM Minimum turning radius



40 MM Maximum obstacle crossing height

KEY FEATURES

- 3-in-1 mobility for powered driving, assisted pushing, and manual use.
- Folds quickly into a compact, travel-friendly size.
- Self-standing design for convenient storage and parking.
- Navigates narrow hallways, elevators, and tight indoor spaces with ease.
- Smart integrated controller with cruise control, USB-C charging, and front lighting.
- Power Assist Mode reduces caregiver effort when pushing.
- Airline-friendly 12Ah lithium battery for worry-free travel.
- Compact enough for car trunks, taxis, and everyday transportation.



Smart Controller , Effortless Driving
Featuring an intuitive top-mounted control system for smooth, precise, and responsive handling.



Compact Foldable and Portable Design
Ergonomic upright folding design for easy storage and travel—no bending or heavy lifting required.



3 in 1 Smart Mobility Solution with Power Assist
3-in-1 intelligent mobility solution built for real-life scenarios — combining electric driving, power assisted pushing, and manual use into one seamless experience.



App Control
Control and manage your wheelchair effortlessly through a smart and user-friendly mobile app.

ACCESSORIES

- Bluetooth Remote Controller
- Cane Holder
- Phone Holder
- Joystick Knob
- Cup & Phone Holder
- Headrest
- Dust Cover