

Electric energy management system

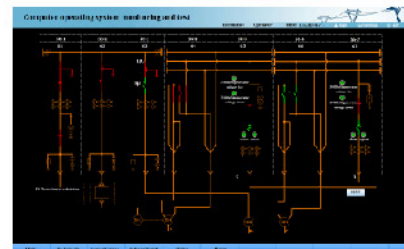
➤ 1.Application

- 📁 Commercial and Office Building
- 📁 Industrial and Mining Enterprise
- 📁 Educational and Medical Institution
- 📁 Municipal Engineering
- 📁 Traffic Industry

➤ 2.Main Functions

Real-time Monitoring

- Clear energy network structure
- Real-time monitoring electric parameters



1

Statistical Statement

- Data reading each second
- Power consumption inquiry



2

Report

- Display daily,monthly and yearly energy consumption
- Support the export of excel format files



3

User Authority Management

- Define the user,password and operation authority



4

Communication Status

- Display communication status
- Fault alarm



5

➤ 3.Product Selection

Application	Type	Functions
High voltage or Low voltage circuit	APM810	Measure all electronic parameters(0.5s),neutral current,unbalance,mean, extremum,2DI+2DO,2-63rd harmonic,RS485(Modbus-RTU).
Low voltage cabinet, Outlet cabinet	AEM96	Three phase electrical parameters measurement(U I P Q PF F) total forward and reverse active energy calculation,forward and reverse reactive energy calculation; 2-31st harmonic,3*1.5(6)A,active energy accuracy : class 0.5s ,reactive accuracy: class 2.
Power cabinet	AMC96L-E4/KC	Three phase power meter,LCD display,I, U, kW, kvar, kVA, kWh, kvarh, Hz, cosΦ, 4DI2DO,1Ep pluse output 3P3W, 3P4W;230V/400V, 1A/5A.
	ADL3000	7P three phase multi-function energy meter, U I P Q S PF,3*1(6)A or 3*10(80)A,split-phase forward active energy calculation,total forward and reverse active or reactive energy calculation,2-31st harmonic , supporting infrared communication.
Lighting cabinet	ADL3000	7P three phase multi-function energy meter, U I P Q S PF,3*1(6)A or 3*10(80)A,split-phase forward active energy calculation,total forward and reverse active or reactive energy calculation,2-31st harmonic , supporting infrared communication.
	ADL100	2P single phase multi-function energy meter, U I P Q S PF, 10(60)A, single total active energy measure,supporting infrared communication.
	ADL10	1P single phase electric energy meter, U I P Q S PF, 10(60)A, single total active energy measure.